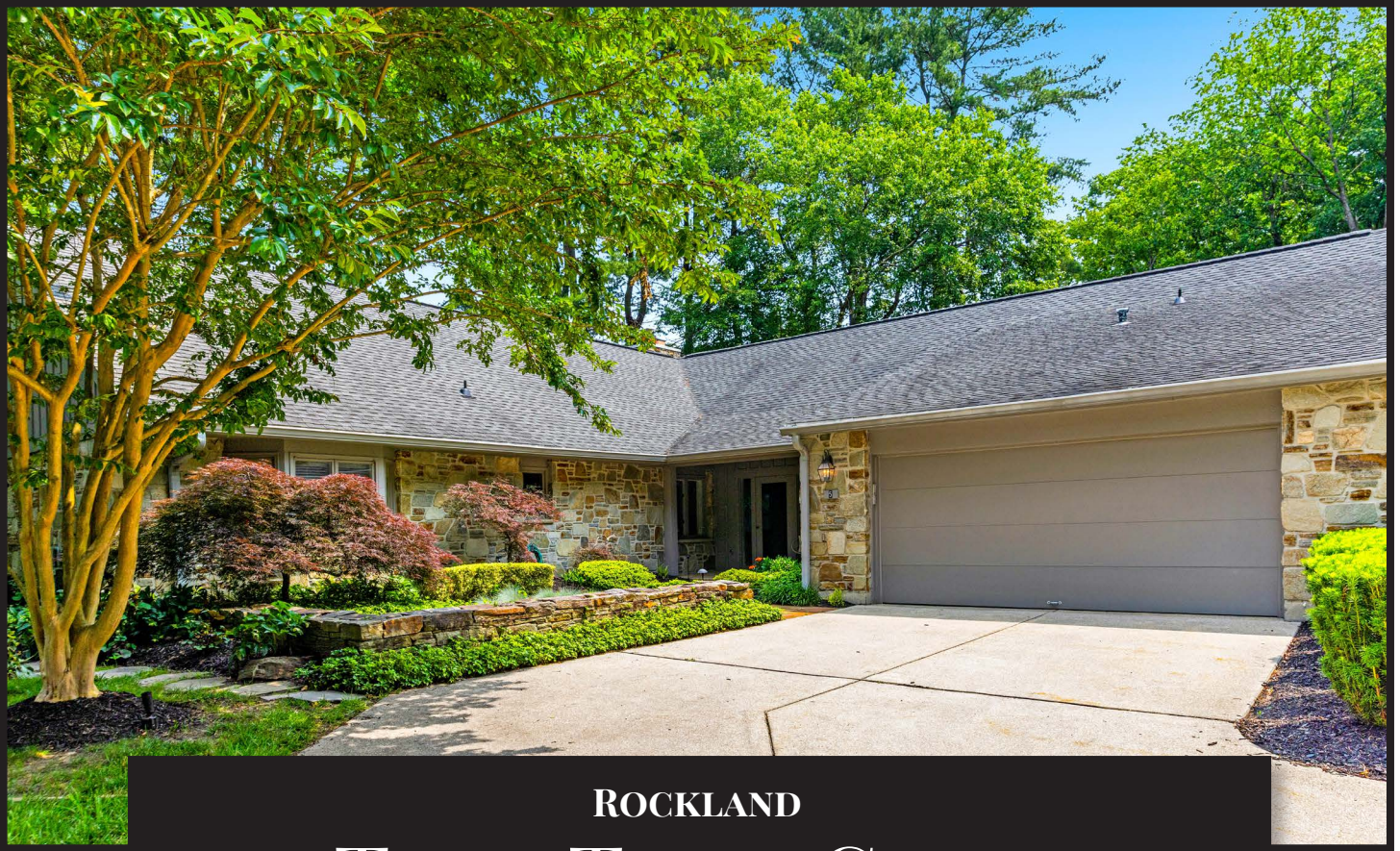
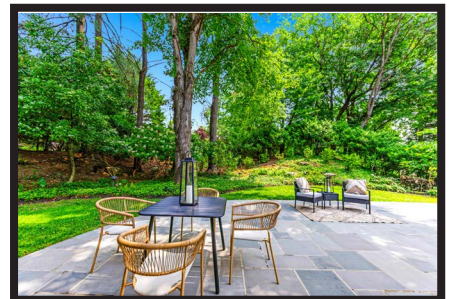


*Hubble
Bisbee*

CHRISTIE'S
INTERNATIONAL REAL ESTATE



ROCKLAND
5 TALL TREE COURT



LOCATIONS

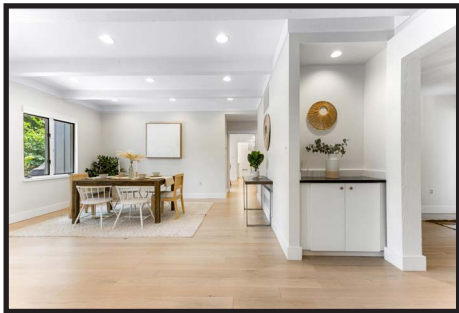
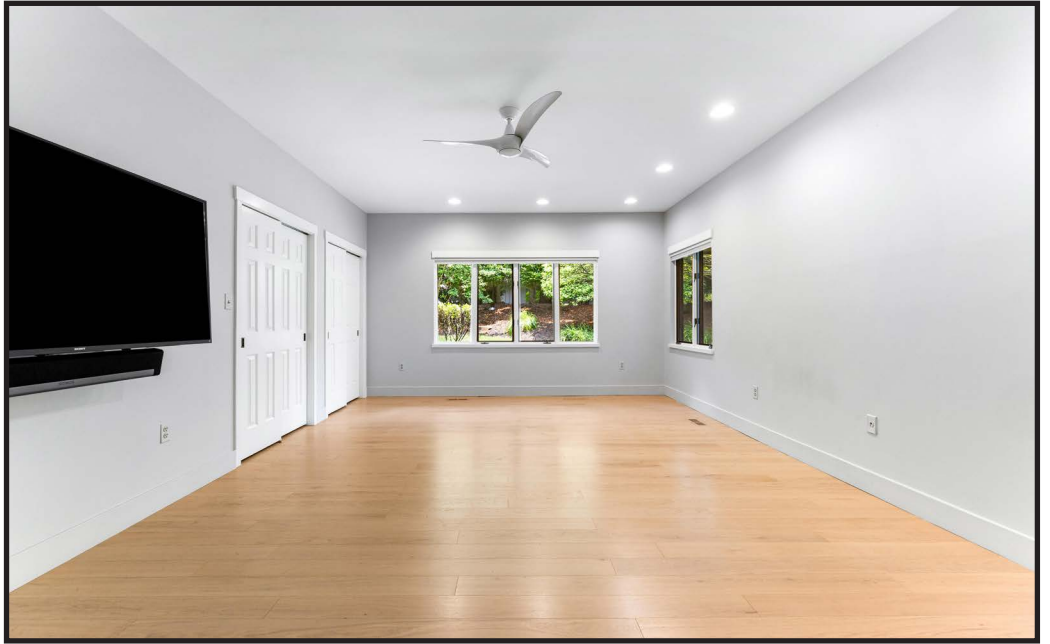
2330 W Joppa Road, Suite 104
Lutherville, MD 21093
181 Harry S Truman Pkwy Ste 200
Annapolis, MD 21401

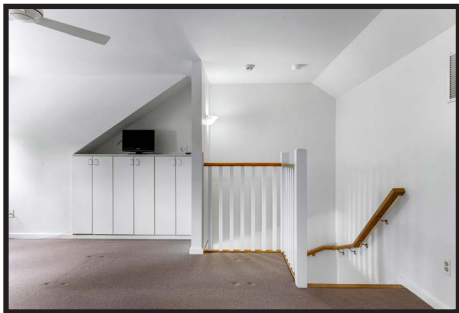
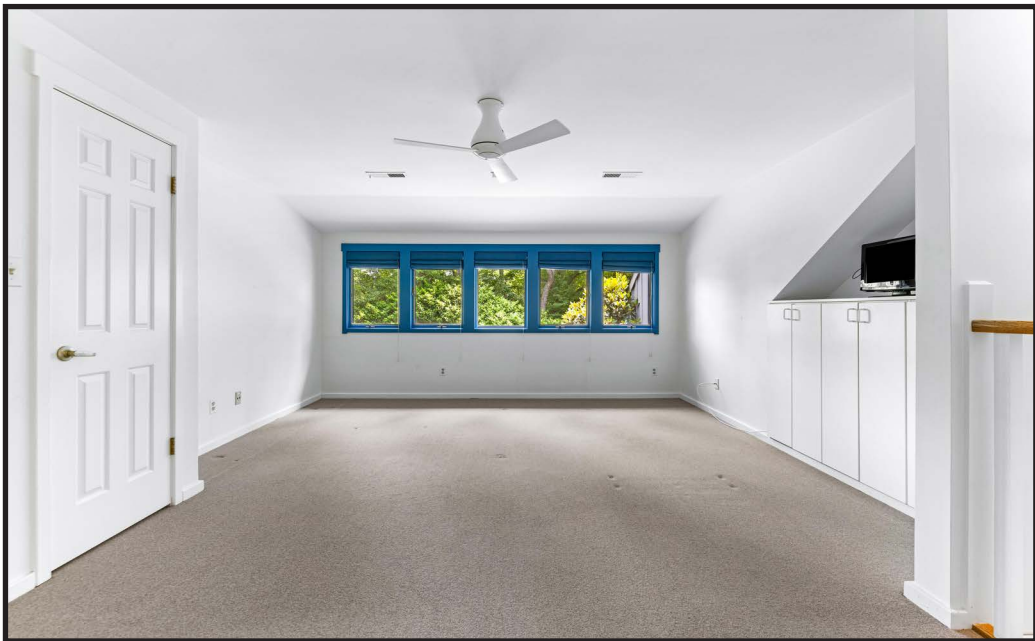


ALISA GOLDSMITH

Realtor®
Alisa@HubbleBisbee.com
917-282-8899 (Mobile)
410-321-1411 (Office)

WWW.HUBBLEBISBEE.COM | (410) 321-1411 (OFFICE) | 





FOYER 15'6" X 9'8"

- Solid wood entry door with sidelights
- Engineered white oak flooring
- Double window with plantation shutters
- Custom fitted walk-in closet
- Utility closet with Lennox HVAC unit with gas heat and Bradford White gas-fired water heater
- Passage to Kitchen with access to Powder Room and Garage and utility closet with Lennox HVAC unit with gas heat and Rheem electric water heater
- Brass/beveled glass ceiling light
- Recessed lighting
- Access to Primary Suite
- Access to Bedroom 2/Den
- Post and beam portal to Living Room

LIVING ROOM 23'2" X 18'9"

- Engineered white oak flooring
- Beamed ceiling
- Stone chimney with woodburning fireplace, stone hearth and mantel shelf, glass door enclosure
- Built-in bookcase
- Illuminated alcove with base cabinet and granite top
- Triple atrium door to Patio
- Triple window and double window
- Recessed lighting
- Wall mounted Polk Audio speakers
- Open flow to Dining Room

DINING ROOM 15'2" X 14'4"

- Engineered white oak flooring
- Beamed ceiling
- Double window
- Recessed lighting
- Pocket door to Kitchen

KITCHEN 25'1" X 21'8"

- Engineered white oak flooring
- Beamed ceiling
- Shaker style white cabinetry including island/breakfast bar, 42" wall cabinets, upper tier cabinets, pot/pan drawers, pull-out trash/recycle bins, utensil drawers and dovetailed drawers
- Marble finish quartz counters and backsplash
- GE stainless steel French door refrigerator with water/ice dispenser
- KitchenAid electric cooktop
- KitchenAid stainless steel built-in microwave
- KitchenAid stainless steel double wall oven
- Bosch stainless steel dishwasher
- Stainless steel undermount sink with hot water dispenser and Insinkerator disposal
- Two pantry closets with overhead wall mount lighting
- Large breakfast area with picture window and Sony wall mounted TV
- Double window
- Glazed exit door to Patio
- Recessed lighting
- Under-cabinet lighting
- Ceiling mount lighting above island
- Open oak staircase to Upper Level Bedroom 3 and Bath
- Access to Laundry Room

LAUNDRY ROOM 6'5" X 6'4"

- Engineered white oak flooring
- Base cabinet with stainless steel utility sink
- Wall cabinet and base cabinet with laminate counter
- Maytag washer and dryer
- Ceiling light

POWDER ROOM

- Engineered white oak flooring
- Full-width vanity with granite top, undermount sink, framed mirror and wall sconce lighting with shades
- Window
- Ceiling light/exhaust fan

DEN/BEDROOM 222'0" X 14'1"

- Double door entry from Foyer
- Engineered white oak flooring
- Picture window and additional windows with Hunter Douglas shades
- Large custom fitted double closet
- Sony wall mounted TV with sound bar
- Recessed lighting
- Ceiling fan

PRIMARY SUITE**HALL**

- Engineered white oak flooring
- Custom fitted double closet
- Recessed lighting
- Passages to Primary Bedroom, Primary Bath and Dressing Room
- Access to Study and Bath 2

STUDY/OFFICE 15'1" X 13'7"

- Engineered white oak flooring
- Custom built-in bookcases with base cabinets
- Bay window with plantation shutters
- Custom fitted double closet
- Recessed lighting
- Double pocket doors to Primary Bedroom

PRIMARY BEDROOM

16'6" X 15'1"

- Engineered white oak flooring
- Custom built-in chest of drawers with TV niche with Sony wall mounted TV
- Two closets flanking built-in
- Picture window with plantation shutters
- Recessed lighting
- Ceiling fan

PRIMARY BATH 15'3" X 9'9"

- Stone finish ceramic tile floor, tub platform and shower stall
- Full-width double vanity/dressing table with granite tops, undermount sinks, plate glass mirrors, mirrored medicine cabinet and overhead lighting
- Soaking tub in platform with granite top and handheld shower
- Shower stall with additional handheld shower and glass door enclosure
- Water closet with flush with Brondell bidet toilet seat
- Two windows with plantation shutters
- Recessed lighting
- Magnavox wall mounted TV
- Exhaust fans

DRESSING ROOM 11'4" X 8'11"

- Engineered white oak flooring
- Custom fitted wardrobe cabinetry
- Ceiling lighting

PRIMARY BATH 2 11'0" X 4'11"

- Stone finish ceramic tile floor and shower stall
- Vanity with granite top, undermount sink, plate glass mirror, mirrored medicine cabinet and overhead lighting
- Shower stall with additional handheld shower, built-in seat, recessed light and sliding glass doors
- Gerber flush

- Window with plantation blind
- Ceiling light/exhaust fan

GARAGE 25'2" X 20'8"

- Two-car
- Finished
- Automatic door opener
- Custom fitted storage closet
- Electric service panels
- Wall mounted shelving and garden tool racks
- Pull-down attic stairs

UPPER LEVEL**BEDROOM 3** 18'6" X 15'2"

- Open oak staircase access with wall sconce light
- Wall-to-wall carpeting
- Five windows with custom Roman shades
- Built-in base cabinets
- Custom fitted walk-in closet with access attic area
- Fujitsu wall mount AC unit
- Ceiling fan
- Private Bath

BATH

- Granite tile floor, wainscot and shower stall
- Cantilevered vanity with Duravit ceramic vessel sink and mirror with vertical lighting
- Shower stall with river rock floor, rain shower and sliding glass doors
- Kohler flush
- Wall mounted glass shelving
- Solar tube
- Exhaust fan

EXTERIOR

- Stone with board and batten siding
- Architectural shingle roof
- Front entry garden with stone garden walls
- Covered front porch (17' X 6') at main entry
- Full-width bluestone patio (59' X 20') with gas line for outdoor grill and Hot Springs hot tub with wooden partition with coat hooks
- Great location in the gated Rockland community
- Amenities include gated 24-hour security, tennis courts, pickleball courts, fitness center, outdoor swimming pool, clubhouse for private gatherings with guest suite
- Close proximity to expressways with easy access to shopping, restaurants, parks and entertainment

All information contained herein deemed reliable but not guaranteed by the Broker

